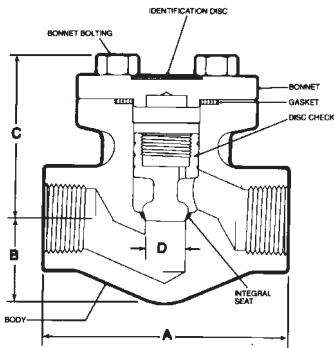
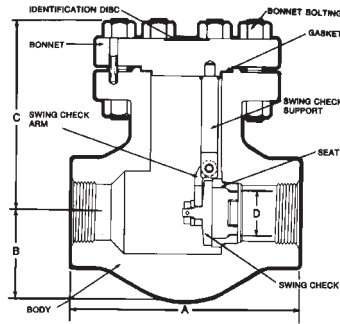


# Vogt Gate, Globe and Check Valves



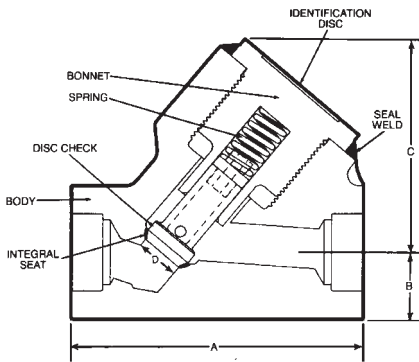
**Piston Check, T-Pattern**

Size: 1/2" - 2" (15mm - 50mm)  
 Pressure Class: 150 - 1500  
 Ends: Threaded, Flanged, Butt & Socket Weld



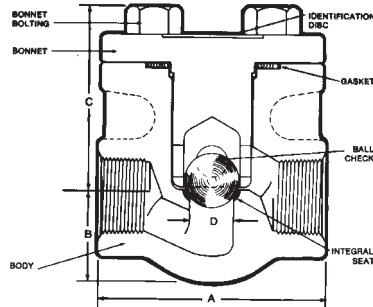
**Swing Check**

Size: 1/2" - 2" (15mm - 50mm)  
 Pressure Class: 150 - 800  
 Ends: Threaded, Socket Weld, Flanged



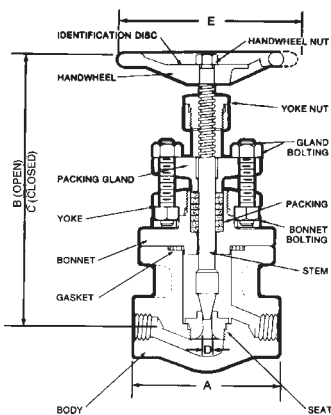
**Piston Check, Y-Pattern**

Size: 1/2" - 2" (15mm - 50mm)  
 Pressure Class: 1690 & 2680  
 Ends: Threaded, Socket Weld



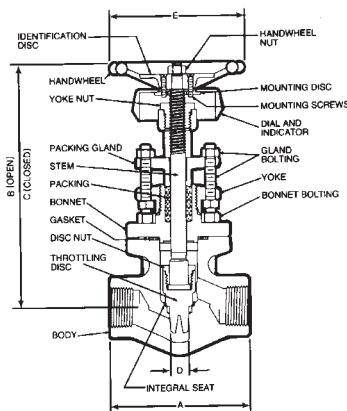
**Ball Check**

Size: 1/2" - 2" (15mm - 50mm)  
 Pressure Class: 150 - 1500  
 Ends: Threaded, Socket Weld, Flanged



**Flow Control Service**

Size: 1/4" - 1" (8mm - 25mm)  
 Pressure Class: 800  
 Ends: Threaded, Socket Weld

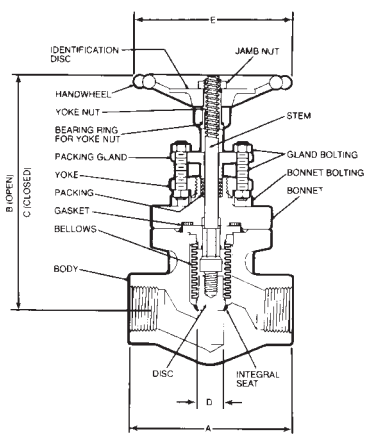


Size: 1/2" - 2" (15mm - 50mm)  
 Pressure Class: 1500  
 Ends: Threaded, Socket Weld

## Materials Availability

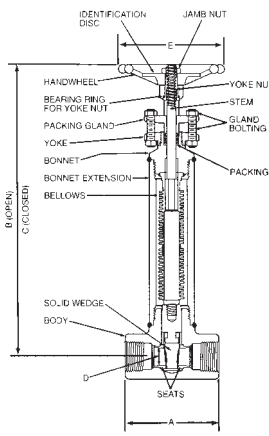
Carbon Steel, Moly Alloy Steel, Nickel Alloy Steel, Stainless Steel

- ASTM A105
- ASTM A182F5
- ASTM A182F9
- ASTM A182F11
- ASTM A182F22
- ASTM A182F316
- ASTM A350LFZ

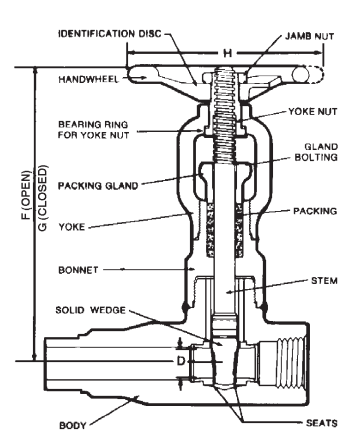


**Bellowsal**

Size: 1/2" - 2" (15mm - 50mm)  
 Pressure Class: 150 - 800  
 Ends: Threaded, Socket Weld, Flanged

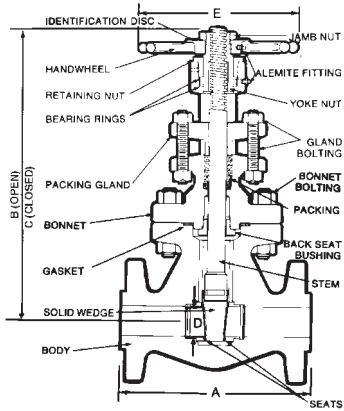


Size: 1/2" - 2" (15mm - 50mm)  
 Pressure Class: 150 - 800  
 Ends: Threaded, Socket Weld, Flanged



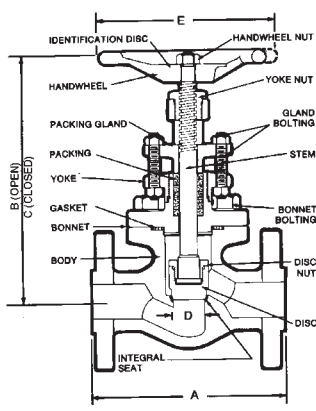
**Extended Body**

Size: 1/2" - 1-1/2" (15mm - 40mm)  
 Pressure Class: 800 - 1500  
 Ends: Threaded, Socket Weld



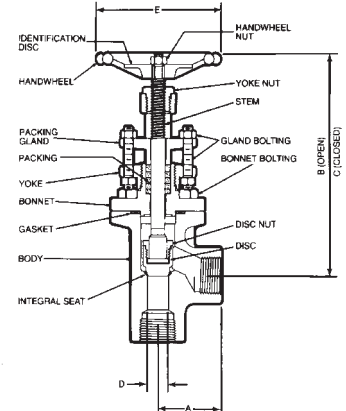
**Gate Valves, Bolted Bonnet**

Size: 1/2" - 4" (15mm - 100mm)  
 Pressure Class: 150 - 1500  
 Ends: Threaded, Flanged, Butt & Socket Weld



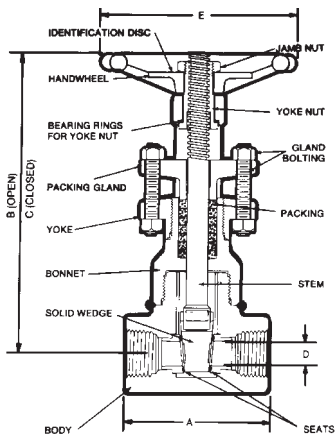
**Globe Valves, Bolted Bonnet**

Size: 1/4" - 3" (8mm - 80mm)  
 Pressure Class: 150 - 1500  
 Ends: Threaded, Flanged, Butt & Socket Weld



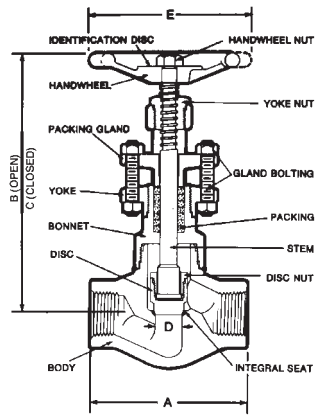
**Angle**

Size: 1/2" - 2" (15mm - 50mm)  
 Pressure Class: 800  
 Ends: Threaded, Socket Weld



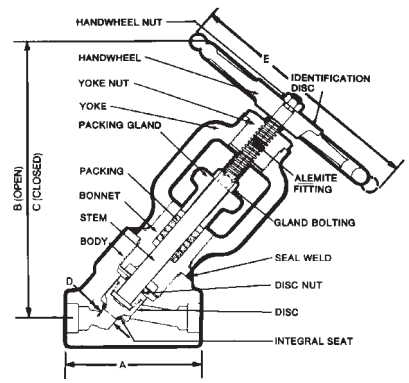
**Gate Valves, Welded Bonnet**

Size: 1/2" - 2" (15mm - 50mm)  
 Pressure Class: 150 - 2500  
 Ends: Threaded, Butt & Socket Weld



**Globe Valves, Welded Bonnet**

Size: 1/4" - 2" (8mm - 50mm)  
 Pressure Class: 150 - 2680  
 Ends: Threaded, Flanged, Butt & Socket Weld



**Y-Pattern**

Size: 1/2" - 2" (15mm - 50mm)  
 Pressure Class: 1690 & 2680  
 Ends: Threaded, Socket Weld